



BURKINA FASO

**ETHICAL HOME &
FASHION TEXTILES**



Funded by the
European Union



ABOUT EFI

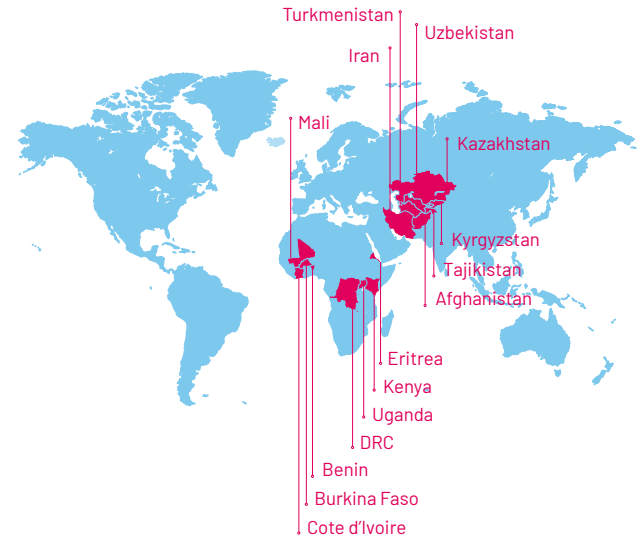
For the Ethical Fashion Initiative, lifestyle choices impact livelihoods. In ten years, fifteen countries, and two continents, EFI has proven that producing and exporting superb quality products is eminently compatible with a fair wage, decent working conditions, job creation, and resilient communities.

Through its network of social enterprises and production hubs, EFI enables talented artists, designers, artisans and micro-producers in emerging economies to connect with discerning international brands in Fashion, Interiors, Fine Foods, Culture and the Arts. Mindful consumers, savvy impact investors and pro-poor champions find value in a virtuous circle that creates not just premium products, but also stable, dignified work for women and men.

EFI is active in Afghanistan, Benin, Burkina Faso, Côte d'Ivoire, DRC, Eritrea, Iran, Kazakhstan, Kenya, Kyrgyzstan, Mali, Tajikistan, Turkmenistan, Uganda and Uzbekistan. All projects apply a rigorous code of conduct based on international labour conventions, directly contributing to Sustainable Development Goals 1, 5, 8, 10, 12 and 13, and indirectly to SDG's 16 and 17.

The Ethical Fashion Initiative is a flagship programme of the International Trade Centre, a joint agency of the United Nations and the World Trade Organization.

Ethical Fashion Initiative worldwide





SUSTAINABLE DEVELOPMENT GOALS

1 NO POVERTY

A white silhouette icon of a family consisting of two adults and two children.

5 GENDER EQUALITY

A white icon representing gender equality, featuring a female symbol with an equals sign inside.

8 DECENT WORK AND ECONOMIC GROWTH

A white icon representing economic growth, featuring a bar chart with an upward-pointing arrow.

10 REDUCED INEQUALITIES

A white icon representing reduced inequalities, featuring a central horizontal bar with four arrows pointing outwards.

12 RESPONSIBLE CONSUMPTION AND PRODUCTION

A white icon representing responsible consumption and production, featuring an infinity symbol with a circular arrow.

13 CLIMATE ACTION

A white icon representing climate action, featuring a globe with a leaf growing from it, set within an eye shape.

16 PEACE, JUSTICE AND STRONG INSTITUTIONS

A white icon representing peace, justice and strong institutions, featuring a dove with an olive branch and a scale of justice.

17 PARTNERSHIPS FOR THE GOALS

A white icon representing partnerships for the goals, featuring three interlocking circles.



📷 Look from Loewe 2021 Paula's Ibiza Collection, © Loewe
 next page: Camperlab Traktori Boots, © Camperlab

LOEWE


 Vivienne
 Westwood

CAMPER

Wales Bonner

EFI IN BURKINA FASO

One of the largest and most significant cotton producers on the African continent, Burkina Faso is famed throughout the world for its high-quality textile production. Strengthening this sector has led to job creation and allowed for substantial social impact within the country.

The introduction of wide looms, producing cloth 130 cm wide, has made this fabric attractive to international buyers, including Loewe, Camper and United Arrows. EFI is investing in training and equipment in the efforts of building production capability in the local industry.


 UNITED ARROWS

GOODEE

The Corner
 by Andrea Lennón

ITOCHU





CABES

EFI's women-led social enterprise partners

EFI is partnered with CABES (Commerce, Artisanat pour le Bien Être Social) to manage production activities in Burkina Faso, Côte d'Ivoire and Benin. Founded in 2014, CABES is a network of 50 associations and nearly 2000 artisans, mostly women, who specialize in the transformation of organic GOTS certified cotton to the quintessential Burkinabé textile Faso Dan Fani.

WORKING WITH CABES

The production and export team at CABES is made up of textile technicians, sales executives, logistics specialists, and specialised dyers that meticulously handle the full trade processes at national, regional and international levels. From sampling and invoicing to logistics and quality control, CABES prides itself in the business practices that successfully connect local artisans to the global market.

GOTS

CABES is committed to its work using GOTS (Global Organic Textile Standard) certified reactive dye, fully compliant with international environmental standards.







FASO DAN FANI



FASO DAN FANI

In Dioula language, native to Burkina Faso, Côte d'Ivoire and Mali, Faso Dan Fani means 'fabric woven at home'. Cotton grown within the country is transformed through numerous stages from ginning, spinning and dyeing to weaving and sewing. These cotton fibres are either handspun or industrially spun in Burkinabé factory, while the weaving and dyeing of cotton threads remain strictly artisanal. Prior to producing the first metre of fabric, nearly 15 days of thread and loom preparation are required. On average, weavers will produce an estimated 2 metres per day.



GINNING



CARDING



SPINNING



DYEING



WARPING



WEAVING



SEWING



QUALITY CONTROL



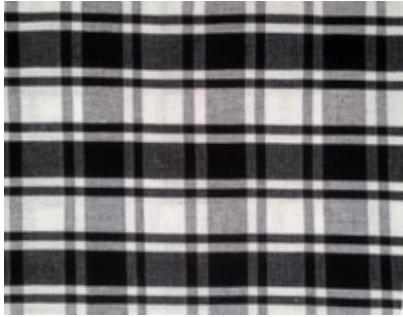
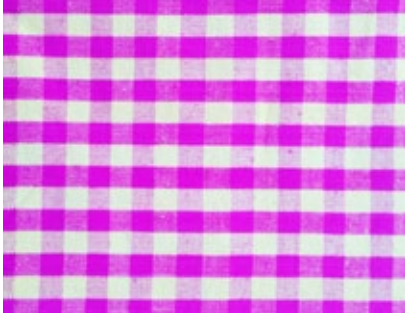
WEAVING STYLES

CABES is available to create a wide range of weaves

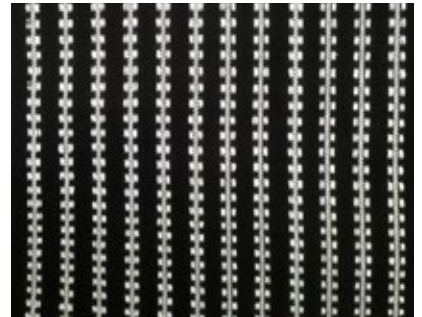
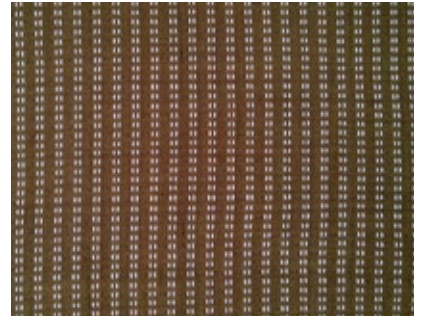
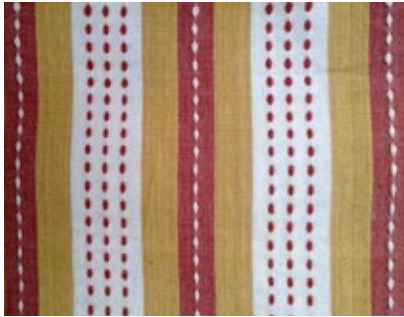
Stripes



Tile



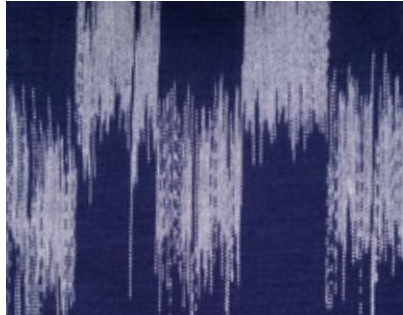
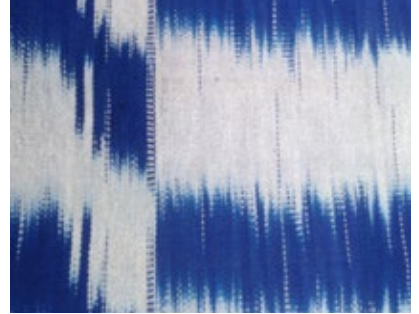
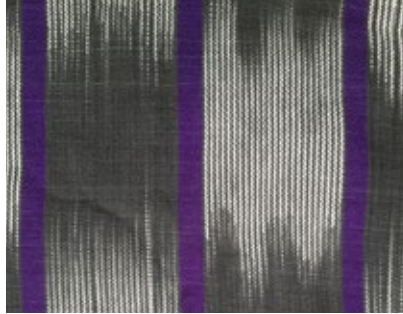
Piqué



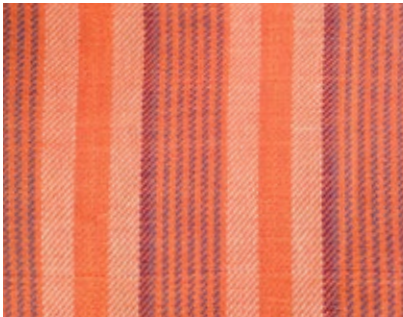
Seersucker



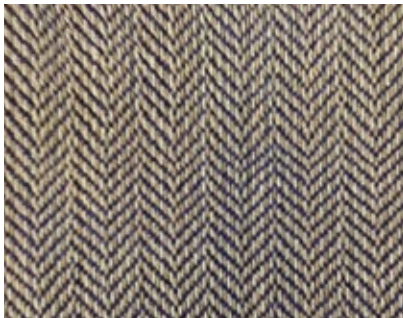
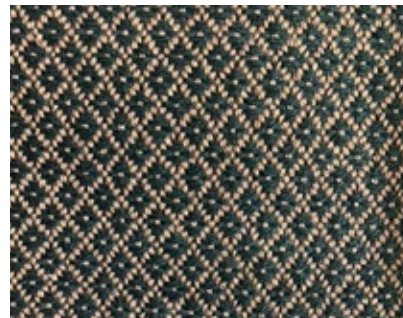
Ikat



Other techniques: twill, chevron and complex weaves



Western patterns



The image shows three pieces of fabric hanging on a line outdoors. The fabric on the left has a repeating pattern of green diamonds with orange crosses inside. The middle fabric features vertical stripes of red and blue with horizontal bands of red and blue. The fabric on the right has vertical stripes of purple and orange with horizontal bands of purple and orange. The background includes a brown wall and green trees under a clear sky.

DYEING TECHNIQUES

Bogolan / Mud Dye

Bogolan/Mud Dye is a Malian textile dyed using an age-old technique that's familiar to Burkina Faso, Guinea, Côte d'Ivoire and Senegal. The word bogolan, from the Bambara language, derives from the words bogo, meaning 'the earth', and lan, meaning 'from'.

Base tinctures are generated by soaking fabric in a decoction of African birch leaves (n'galama) and later being left to dry in the sun. Following the base tinctures, the designs are made in fermented mud with the help of a delicate brush.



soaking and drying the fabric



drawing the design with fermented mud



soaking and drying to achieve a darker tone

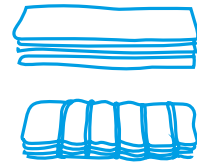


Bogolan / Mud Dye



Kôkô Dunda / Tie-Dye

Kôkô Dunda has origins in the city of Bobo Dioulasso, Burkina Faso. The name literally translates to 'entrance to Kôkô', the name of the district in Bobo Dioulasso where the dyers traditionally work.



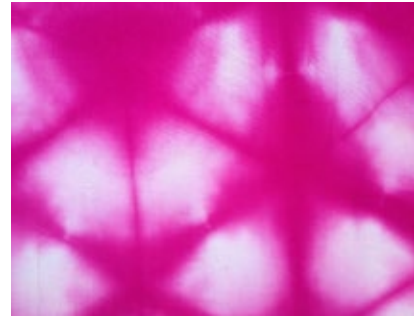
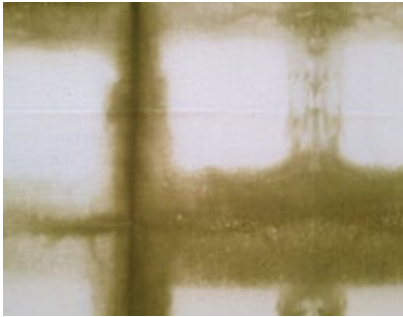
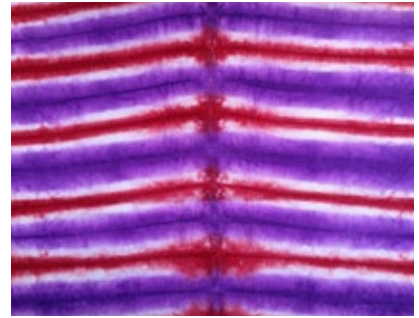
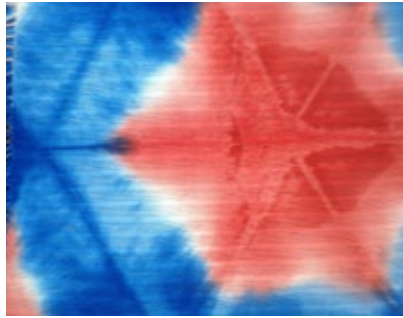
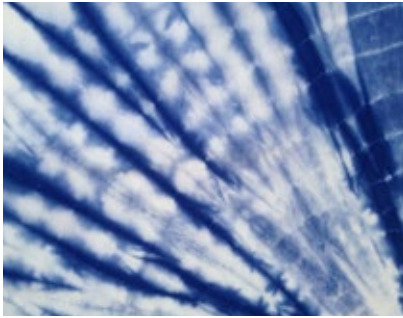
folding and tying
(different methods)



dyeing

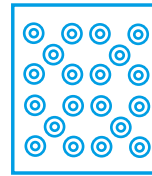


Kôkô Dunda / Tie-Dye



Batik

Batik is a fabric that is printed on by coating certain parts with wax, utilising wooden stamps to carefully place the wax on the fabric. Once the wax is fully dried, the fabric first goes into a dye bath, followed by a hot bath where the wax melts and the final result is visible.



+

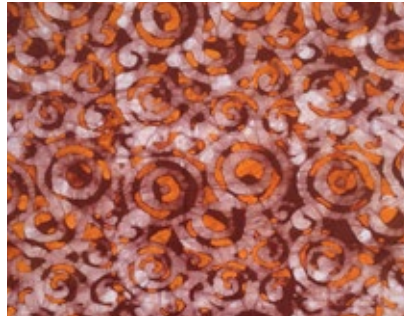


applying hot wax
to the fabric with a
wooden stamp

dyeing and de-waxing



Batik



Indigo

A purplish-blue dyeing material extracted from the leaves and stems of the indigo tree, "indigo" significantly receives its name from the resulting deep dark blue colouring.

In Africa, the two most widely used indigo plants are *Indigofera Arrecta* and *Lonchocarpus Cyanescens*. The first grows in dry areas and results in a blue called 'savanna blue' and the second, more common in West Africa, gives off a colour known as 'forest blue'.

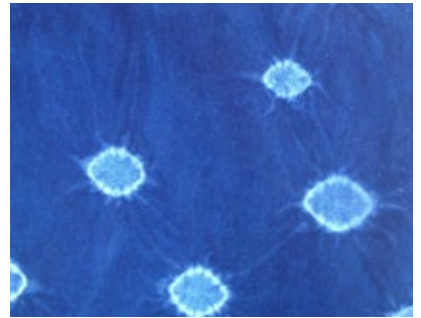
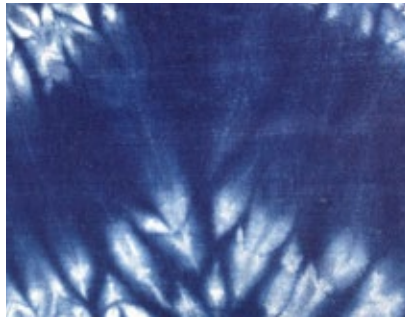
The leaves collected from these plants are used to prepare the dye, which are used either fresh or dried and are compacted into balls or a paste that are later diluted.



Indigo plant



Indigo



NATURAL DYES

CABES sources local ingredients to produce a range of natural dyes that are distinctly Burkinabé. For each ingredient, a range of shades are available.



LEOCARPUS
(SIIGA in Mooré language)



ACACIA NILOTICA
(PEGNEGA in Mooré language)



CLAY



YELLOW
Siiga solution



GREEN
Siiga solution +
Iron sulphate



BEIGE
Pegnega solution



GREY
Pegnega solution +
Iron sulphate



BLACK
Siiga solution +
Clay



BROWN
Siiga solution +
Potassium + Clay

Jolan Fini



CUSTOM FABRICS

The CABES team is able to match your Pantone references and follow your design specifications to create custom fabrics.



CUT AND SEW WORKSHOP

CABES is available to work on ready-to-wear and home décor goods from its catalogue or from client technical specifications. Pattern-making and gradation is available with small minimum order quantities.





COMPLIANCE

CODE OF CONDUCT



EFI's rigorous compliance mechanism is arguably what differentiates it most from other actors in sustainable fashion. EFI applies a code of conduct based on international labour conventions and aids social enterprise partners for sustained and continuous improvement.

Social workers embedded in local communities monitor production to ensure both formal and informal workers are treated fairly and can lift themselves out of poverty through their work.

ESG Due Diligence System

EFI's environmental, social and governance (ESG) framework is a tool used to assess risk in supply chains and prevent, reduce, and mitigate it. EFI provides a foundation of business ethics and a set of tools to measure social and environmental sustainability and good governance. In turn this enables businesses to build and manage equitable and sustainable value chains.



First stage ETHICAL SOURCING REPORTING

(of Supply Chain Due Diligence)



Second stage ESG REPORTING

(of Supply Chain and Company Due Diligence)



ENVIRONMENTAL

- Climate Change – contribution to the Paris agreement
- Usage of chemicals
- Pollution and solid waste management
- Use of renewable energies
- Utilisation of natural capital



SOCIAL

- Dignity, equality, safety, health, and well-being at work
- Human capital development: the skills of the future
- Regeneration of social capital
- Community relations and social opportunities



GOVERNANCE

- Ethical behaviour
- Purpose and quality of governing body
- Stakeholder engagement

A journey, not a checklist, this system is unashamedly about a better way of making fashion and lifestyle products.

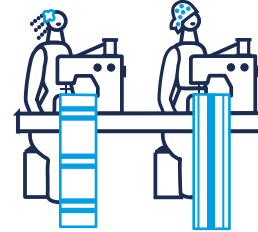
EFI works closely with CABES to implement this framework.

ORDER ASSESSMENT REPORTS

In order to measure the social impact of our work, data is carefully collected to verify the social significance of each order placed.

Individual stages of the manufacturing process are evaluated with detailed order-based assessments that track the impact on the communities directly involved.

A Social Impact Report is produced and verified by a third party prior to being distributed to the brands who can use the reports for marketing purposes.



PRODUCT PASSPORT

The products produced within the EFI network can be equipped with a product passport for a futuristic interaction between the brand and the consumer. Beginning with a chip or code, the product passport creates a dialogue between the owner and the item by allowing a glimpse into the history of each product and the positive impact it has created.



CSR OPPORTUNITIES WITH CABES

CABES is available to partner with international clients on a wide range of social and environmental sustainability projects.

Please contact us to learn more about creating a positive impact together.



 Gender equality workshop hosted by CABES in 2021



Skills training and capacity building



Co-creation of new product types for export



Decarbonization activities



Environmental protection



Community outreach



Womens opportunities

THE BOUTIQUE

The CABES boutique came to life towards the end of 2018 with the intention of introducing artisanal products and fabrics to a new audience and market. Centrally located in Ouagadougou, the store features its notable specialty fabrics, in addition to products ranging from fashion and jewellery to interior decor and kitchenware, all crafted in Faso Dan Fani. A visual display of the ongoing vibrant projects in Burkina Faso, the boutique welcomes numerous visitors varying from Burkinabés to expats, fashion personalities and enterprise partners.

Make the CABES boutique a stop on your next visit to Burkina Faso.



TERMS OF TRADE

Handwoven cotton textiles / products

TEXTILES

SAMPLING

Stock with no MOQ
Minimum 50m
6-8 weeks
Production price + 30%

PRODUCTION

Minimum 200m
8-12 weeks
Between 25-32 €/m

FINISHED GOODS

Information on request. Depending of fabric choices

* 50% payment upon placing order and 50% upon delivery

* Prices are Ex-Works.

CONTACT

info@cabes.bf
www.cabes.bf



GIE CABES



@cabes_official

+226 70 02 21 24 / 75 65 81 81

**HQ Address: CABES GIE
Secteur 29 Kouritenga
17 BP 270 Ouagadougou 17**



@ethicalfashion



@_ethicalfashion



@ITC Ethical Fashion Initiative



ethicalfashioninitiative.org



ojoncoux@intracen.org (Oceane Joncoux)

wmaiga@intracen.org (Fatouma Maiga)



This brochure has been produced with the financial assistance of the European Union. Its contents are the sole responsibility of ITC Ethical Fashion Initiative and do not necessarily reflect the views of the European Union.